



NewsWay Reports



Production events analysis



Graphical data visualization



A production data warehouse

NewsWay Reports provides easy and quick access and analysis of accumulated production data. This enables you to tune and optimize production for maximum performance, at minimum cost.

making
complex
publishing
simple

This powerful browser-based report generation software provides the ability to compare planned schedules with actual job completion, track deadlines, evaluate plate consumption and track waste. It allows you to review file input and output time of each NewsWay workflow process, and log user times. This facilitates the rapid identification of production bottlenecks and enables you to make real-time adjustments to your production.

NewsWay Reports integrates with any workflow. The reports generated are

easily exported to PDF or Excel formats, making them accessible by other people within your organization. You can even automate the creation and distribution of status reports to the executive management for "first thing in the morning".

The production statistics are accessible from the NewsWay Reports viewer and via any 3rd party data visualization tool, providing you with the tools you need for in depth analysis of production.

NewsWay Reports

For more information contact any of our subsidiaries or visit our web site: www.newsday.com

New ProImage Ltd.
Poleg Industrial Park,
4 Hagavish St.
Netanya P.O. Box 8764,
Israel, 42507
Tel: +972-732-600-300
Fax: +972-732-600-333
pji@newsday.com

New ProImage Ltd.
Rowlandson House
289-293 Ballards Lane
London N12 8NP
United Kingdom
Tel: +44 (0) 84545 88600
Fax: +44 (0) 84545 88601
pia@newsday.com

New ProImage America, Inc.
103 Carnegie Center - Suite 300,
Princeton, NJ 08540
USA
Tel: (609) 844-7576
Fax: (609) 895-2666
Contact: John Ialacci
pia@newsday.com

Make the right decisions with NewsWay Reports

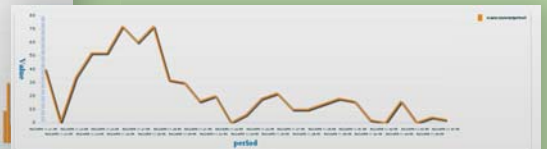
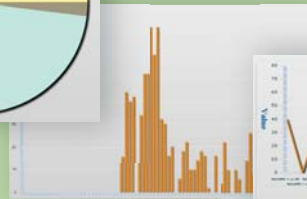
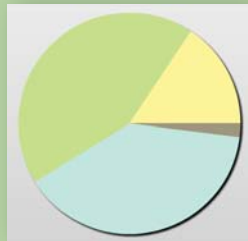
NewsWay Reports is a browser based application allowing easy and quick access to accumulated production data. The data is presented in a consistent, easy to read format, enabling statistical analysis to be performed effortlessly and facilitating better decision making.

Additionally, its advanced querying capabilities enable in-depth analysis of production data, customized to your requirements.

High Performance Backbone

NewsWay Reports is anchored on a specialized Reports Data Processor. The Reports Data Processor gathers production information and performance details from the machines without hampering the production flow of events. The accumulated data is reshaped to fit into a data warehouse where the production information can later be queried with simplicity and efficiency, guaranteeing high performance response to queries.

The vast amount of information gathered in such a data warehouse enables tracking of even the minutest of trends and bottlenecks.



Start Time	End Time	Temperature
2009-10-11 00:00	2009-10-11 00:05	0
2009-10-11 00:05	2009-10-11 00:10	0
2009-10-11 00:10	2009-10-11 00:15	0
2009-10-11 00:15	2009-10-11 00:20	0
2009-10-11 00:20	2009-10-11 00:25	0
2009-10-11 00:25	2009-10-11 00:30	0
2009-10-11 00:30	2009-10-11 00:35	0
2009-10-11 00:35	2009-10-11 00:40	0
2009-10-11 00:40	2009-10-11 00:45	0
2009-10-11 00:45	2009-10-11 00:50	0
2009-10-11 00:50	2009-10-11 00:55	0
2009-10-11 00:55	2009-10-11 01:00	0

Comprehensive reports

NewsWay Reports offers three suites of reports designed to meet your budget and needs. All suites include the NewsWay Reports Data Processor and NewsWay Reports Data Warehouse.

NewsWay Basic Reports

Ideal for many, this solution comes complete with a basic set of reports for output statistics and analysis, workflow throughput, and reporting on historical data.

NewsWay Enterprise Reports

NewsWay Enterprise Reports provides an extended suite of reports that additionally include reports for enterprise transmission and waste analysis.

NewsWay First Class Reports

This solution is fully customizable. It provides a tailored solution to meet the needs of the most demanding print production organization.

A screenshot of a web-based application interface. It features a table with multiple columns and rows of data. Below the table is a 'Summary Table' section with a few rows of data. The interface includes navigation buttons like 'Back' and 'Next'.